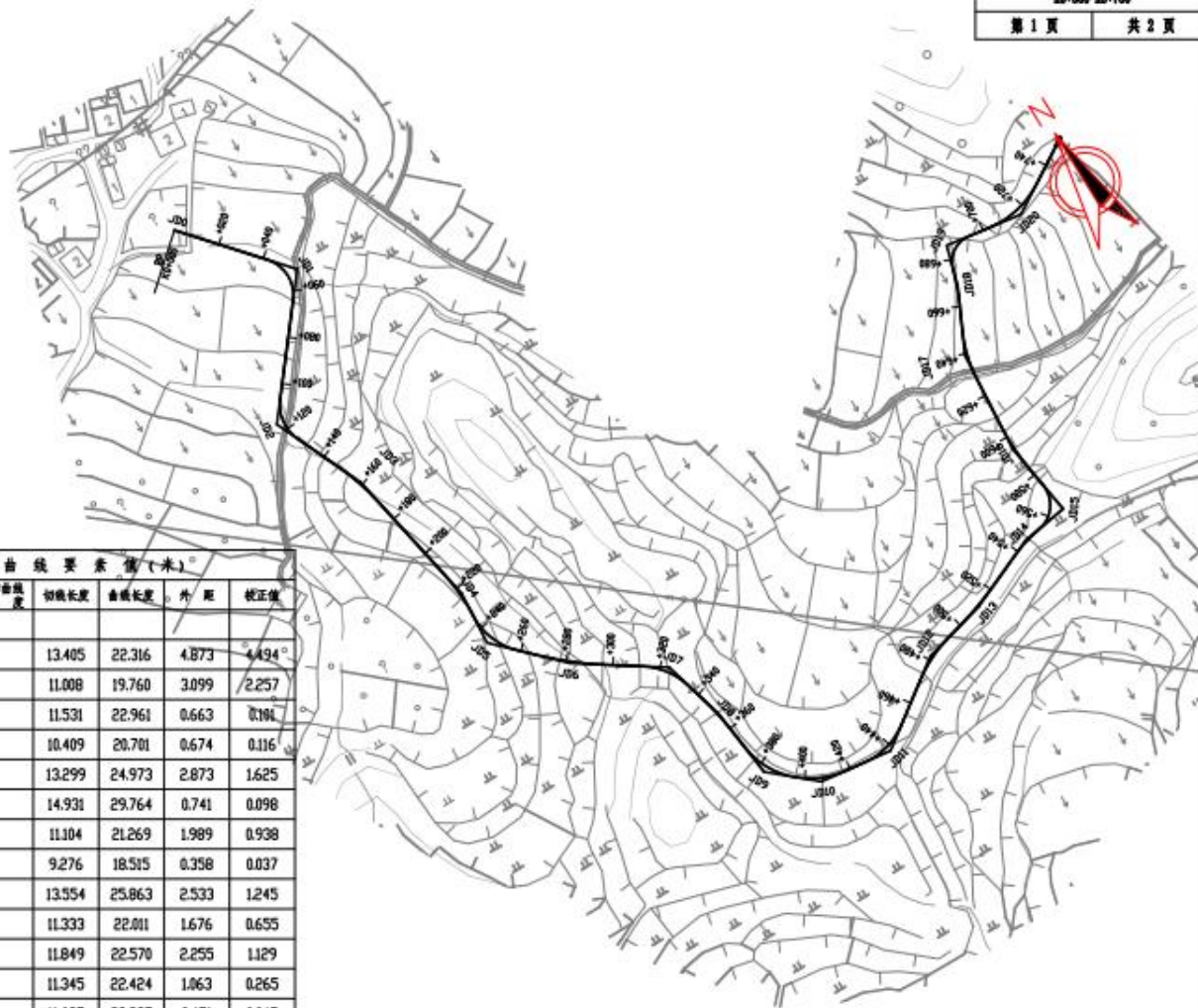
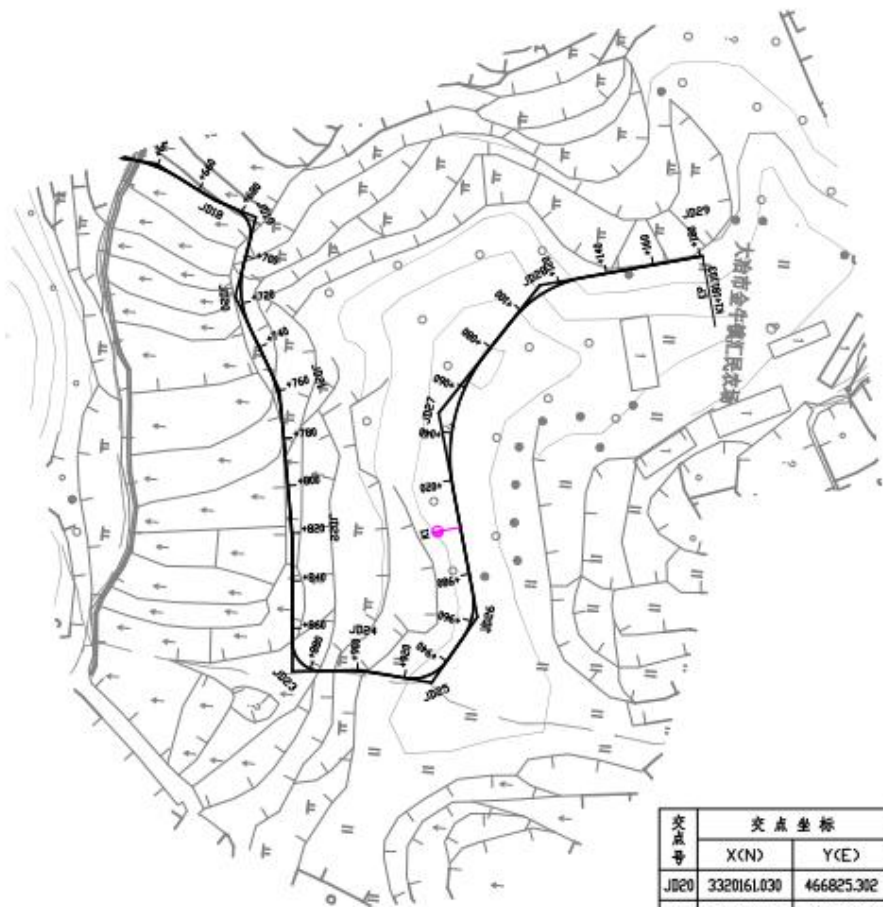


2、金牛镇黄泥村金青牛生态产业路一



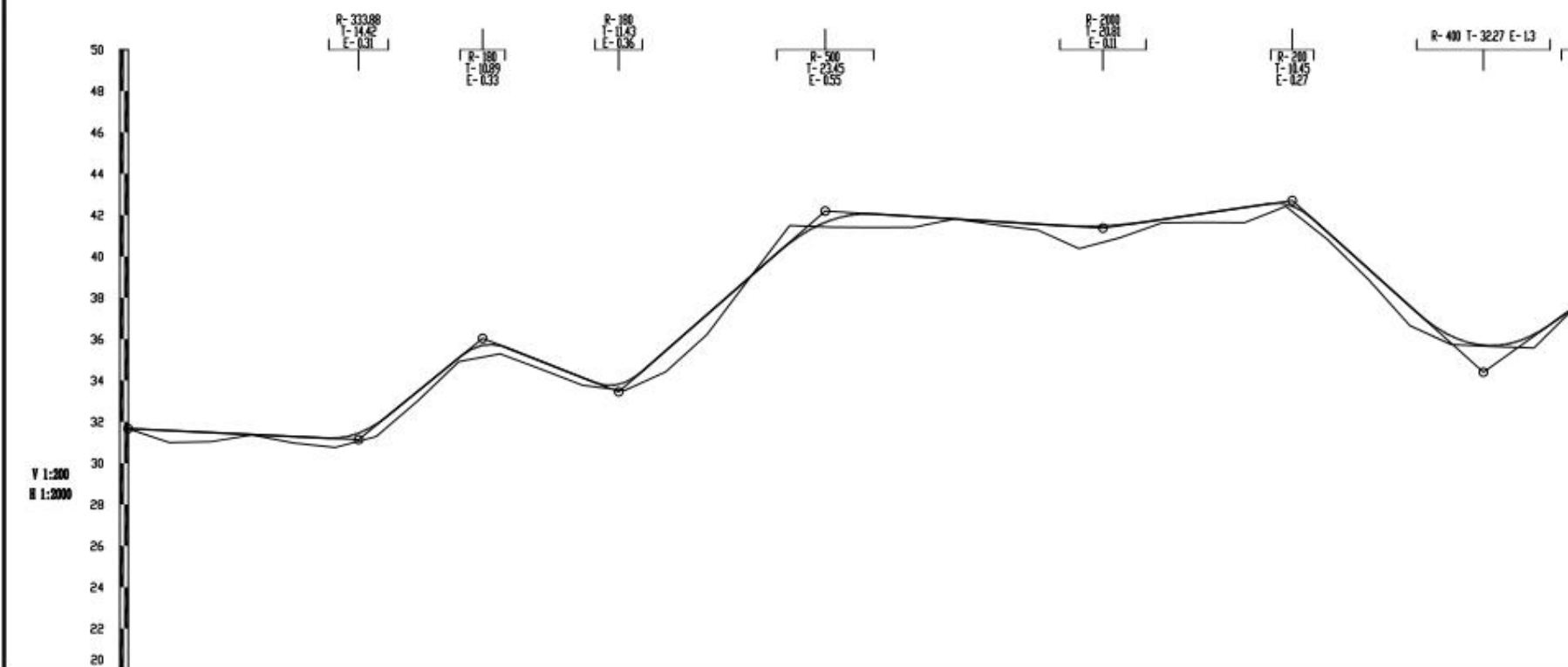
曲线元素表

交点号	交点坐标		交点桩号	转角值	曲线要素值(米)					
	X(N)	Y(E)			半径	缓和曲线长度	切线长度	曲线长度	外距	校正值
JD0	3320346.229	466513.869	K0+000							
JD1	3320304.339	466549.787	K0+055.180	79°54'53"(Y)	16		13.405	22.316	4.873	4.494°
JD2	3320252.535	466507.379	K0+117.634	62°53'47.3"(Z)	18		11.008	19.760	3.099	2.257
JD3	3320212.822	466524.723	K0+158.712	13°09'20.3"(Y)	100		11.531	22.961	0.663	0.186
JD4	3320149.344	466536.416	K0+223.157	14°49'33.9"(Y)	80		10.409	20.701	0.674	0.116
JD5	3320125.705	466534.602	K0+246.749	48°45'48"(Z)	29.343		13.299	24.973	2.873	1.625
JD6	3320099.515	466560.226	K0+281.764	11°22'07.8"(Z)	150		14.931	29.764	0.741	0.098
JD7	3320075.708	466595.181	K0+323.958	40°37'16"(Y)	30		11.104	21.269	1.989	0.938
JD8	3320047.741	466602.739	K0+351.991	8°50'24.8"(Y)	120		9.276	18.515	0.358	0.037
JD9	3320016.265	466606.204	K0+383.620	42°20'17.7"(Z)	35		13.554	25.863	2.533	1.245
JD10	3319999.813	466624.878	K0+407.262	33°39'09.9"(Z)	37.474		11.333	22.011	1.676	0.655
JD11	3319995.462	466656.943	K0+438.967	43°06'22.8"(Z)	30		11.849	22.570	2.255	1.129
JD12	3320020.866	466692.717	K0+481.714	21°24'49.5"(Y)	60		11.345	22.424	1.063	0.265
JD13	3320028.040	466721.566	K0+511.177	8°52'19.6"(Z)	150		11.637	23.227	0.451	0.047
JD14	3320041.436	466753.377	K0+545.647	14°38'15.1"(Y)	60		7.706	15.328	0.493	0.084
JD15	3320044.447	466774.272	K0+566.674	90°05'37.8"(Z)	13.383		13.405	21.044	5.559	5.766
JD16	3320077.576	466769.443	K0+594.387	12°59'08"(Y)	100		11.381	22.664	0.646	0.098
JD17	3320122.405	466773.122	K0+639.269	21°19'55.4"(Y)	60		11.300	22.339	1.055	0.262
JD18	3320148.993	466786.104	K0+668.595	9°16'06.6"(Z)	100		8.106	16.177	0.328	0.035
JD19	3320166.485	466791.370	K0+686.828	82°22'42.8"(Y)	11.612		10.162	16.696	3.819	3.628

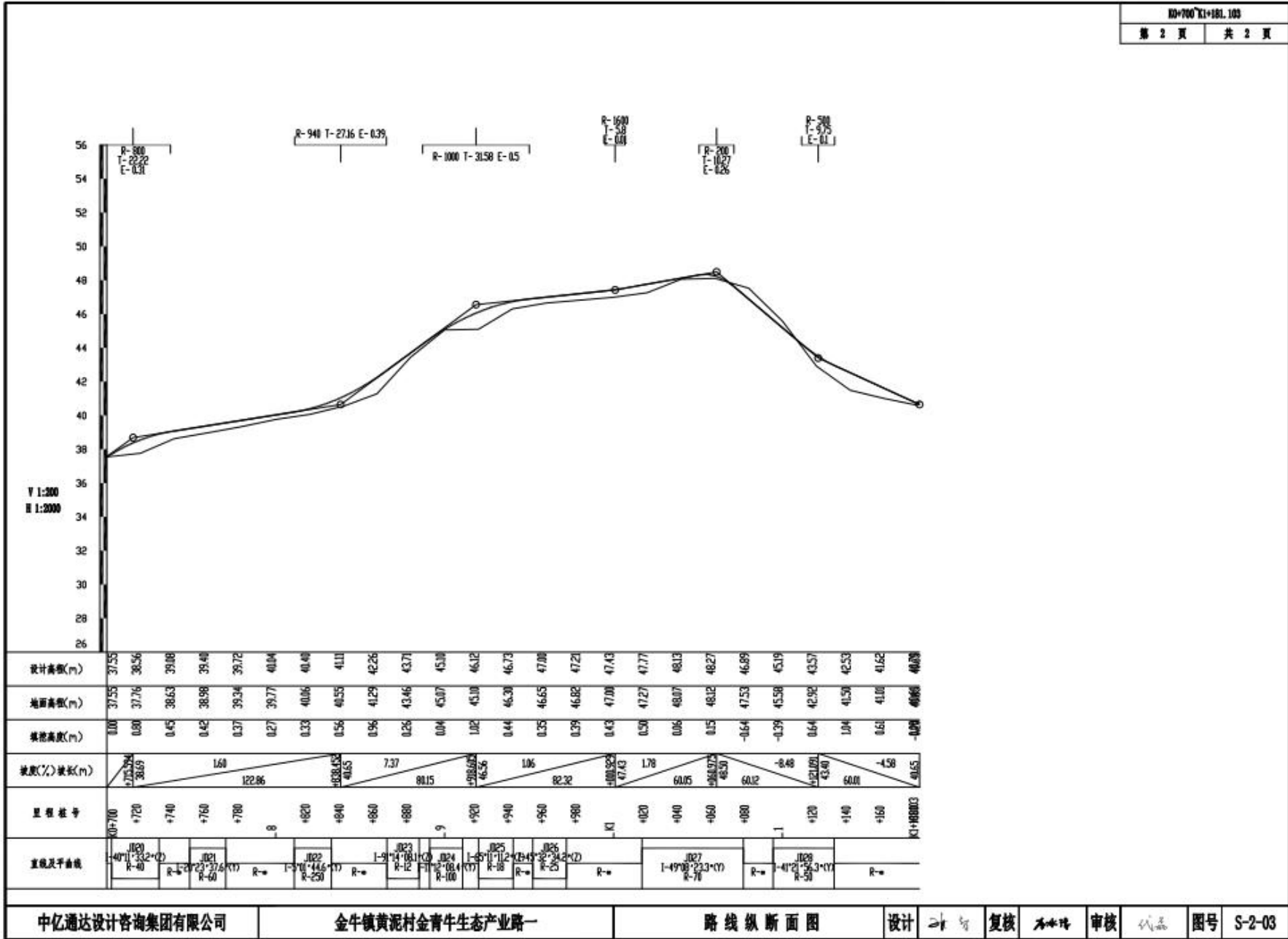


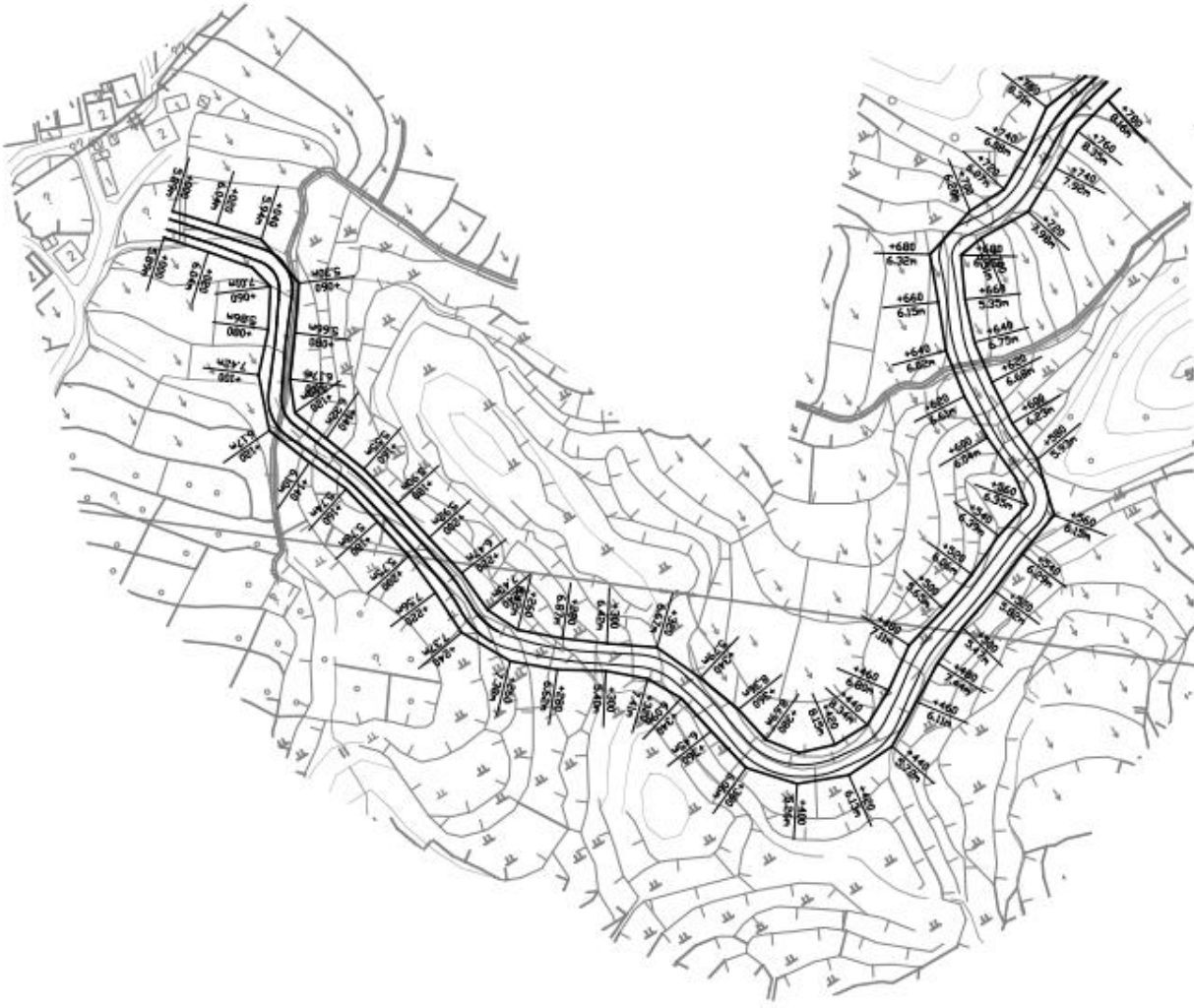
曲线元素表

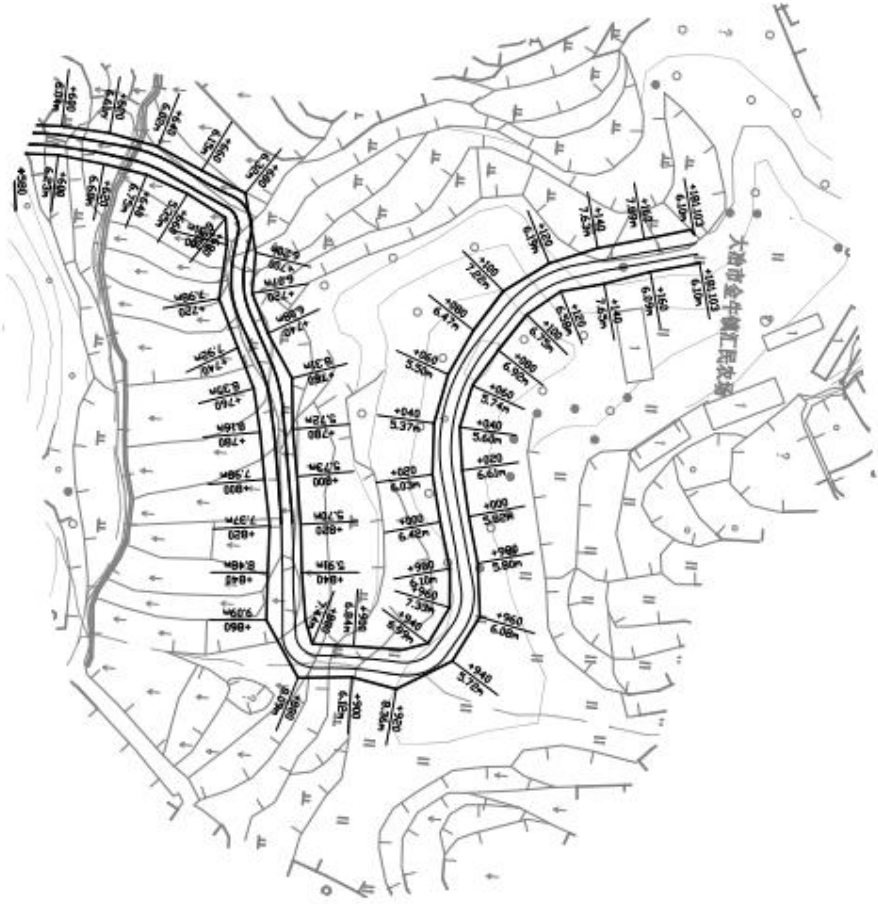
交点号	交点坐标		交点桩号	转角值	曲线要素值(米)					
	X(N)	Y(E)			半径	缓和曲线长度	切线长度	曲线长度	升 降	校正值
JD20	3320161.030	466825.302	K0+717.567	40°11'33.2″(Z)	40		14.635	28.060	2.593	1.210
JD21	3320183.521	466862.646	K0+759.951	20°23'37.6″(Y)	60		10.792	21.356	0.963	0.228
JD22	3320195.054	466923.887	K0+822.040	5°01'44.6″(Y)	250		10.979	21.943	0.241	0.014
JD23	3320200.564	466979.726	K0+878.136	91°14'08.1″(Z)	12		12.262	19.108	5.157	5.415
JD24	3320228.624	466976.345	K0+900.984	11°12'08.4″(Y)	100		9.807	19.552	0.480	0.063
JD25	3320259.224	466978.662	K0+931.610	65°11'11.2″(Z)	18		11.508	20.479	3.365	2.538
JD26	3320275.612	466949.273	K0+962.721	45°32'34.2″(Z)	25		10.494	19.872	2.113	1.117
JD27	3320250.988	466865.601	K1+048.825	49°08'23.3″(Y)	70		32.004	60.036	6.969	3.972
JD28	3320288.019	466808.012	K1+113.320	41°21'56.3″(Y)	50		18.876	36.098	3.444	1.654
JD29	3320354.802	466788.997	K1+181.103							

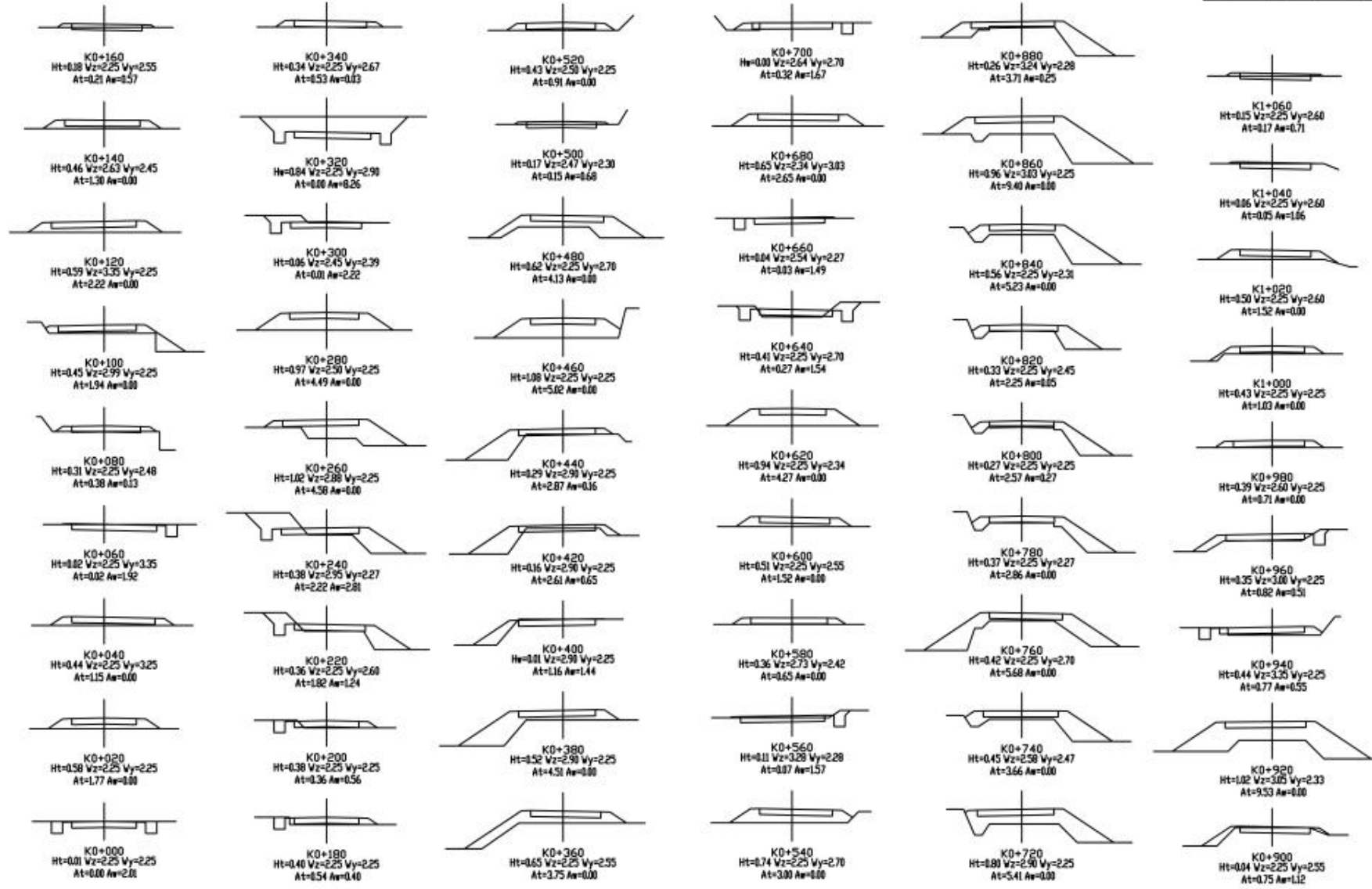


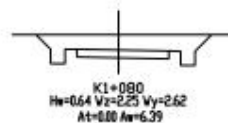
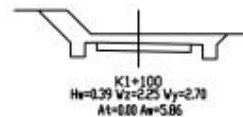
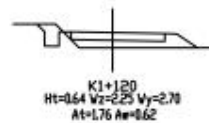
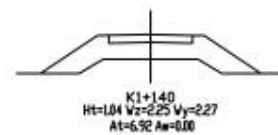
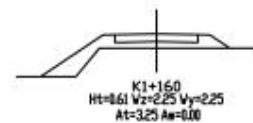
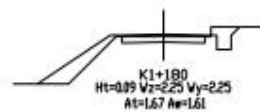
设计高程(m)	31.67	31.57	31.48	31.38	31.29	31.21	31.09	33.47	35.10	35.69	34.92	34.13	33.96	35.44	37.19	38.94	40.65	41.76	42.06	41.94	41.81	41.69	41.56	41.46	41.53	41.79	42.08	42.37	42.53	41.19	39.40	37.56	36.15	35.65	35.69	36.22	37.55
地面高程(m)	31.67	31.00	31.04	31.37	30.98	30.76	31.30	31.89	34.92	35.29	34.54	33.77	33.50	34.42	36.22	38.08	41.50	41.42	41.41	41.94	41.82	41.80	41.52	41.27	40.38	40.94	41.62	41.63	41.63	40.84	38.89	36.66	35.74	35.65	35.57	36.22	37.55
填挖高度(m)	0.00	0.58	0.44	0.02	0.31	0.45	0.59	0.46	0.18	0.40	0.38	0.36	0.38	1.02	0.97	0.06	-0.04	0.34	0.65	0.52	-0.01	0.16	0.29	1.08	0.62	0.17	0.43	0.74	0.11	0.36	0.51	0.94	0.41	0.04	0.65	0.00	
坡度(%)坡长(m)	3.67	111.47		-4.46	111.468		0.17	60.00		-17.408	65.84	-2.93	237.322		8.76	99.88		-337.229	42.20		134.34	-1.62	-471.528		1.46	91.59		-563.229	-0.99	653.580		7.15	44.4166811				
里程桩号	00+000	+020	+040	+060	+080	+100	+120	+140	+160	+180	+200	+240	+260	+280	+300	+320	+340	+360	+380	+400	+420	+440	+460	+480	+500	+520	+540	+560	+580	+600	+640	+660	+680	00+700			
直线及平曲线	R=179.54		R=16		R=18		R=100		R=86		R=150		R=30		R=120		R=25		R=37.47		R=30		R=60		R=150		R=60		R=100		R=60		R=100				

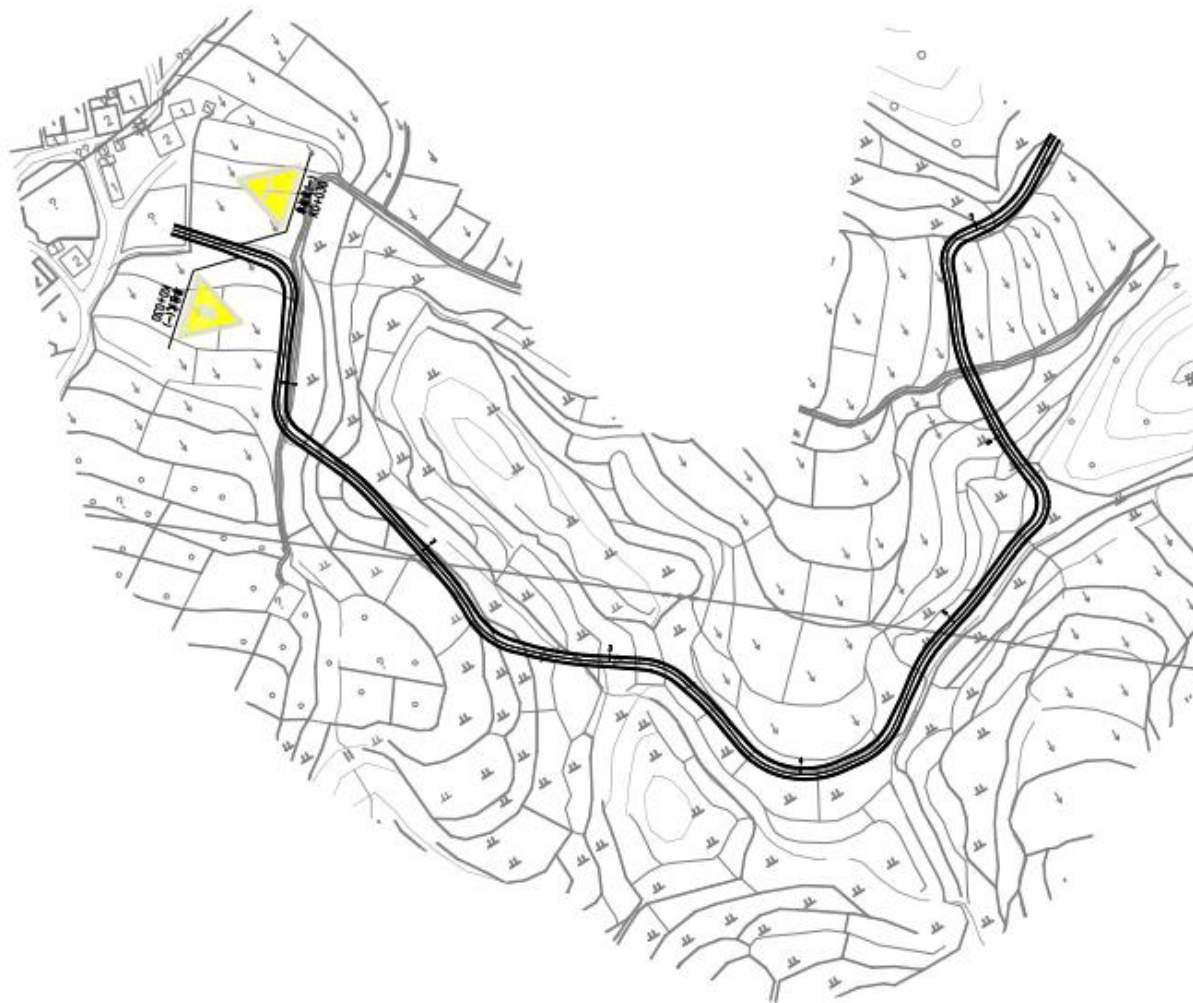


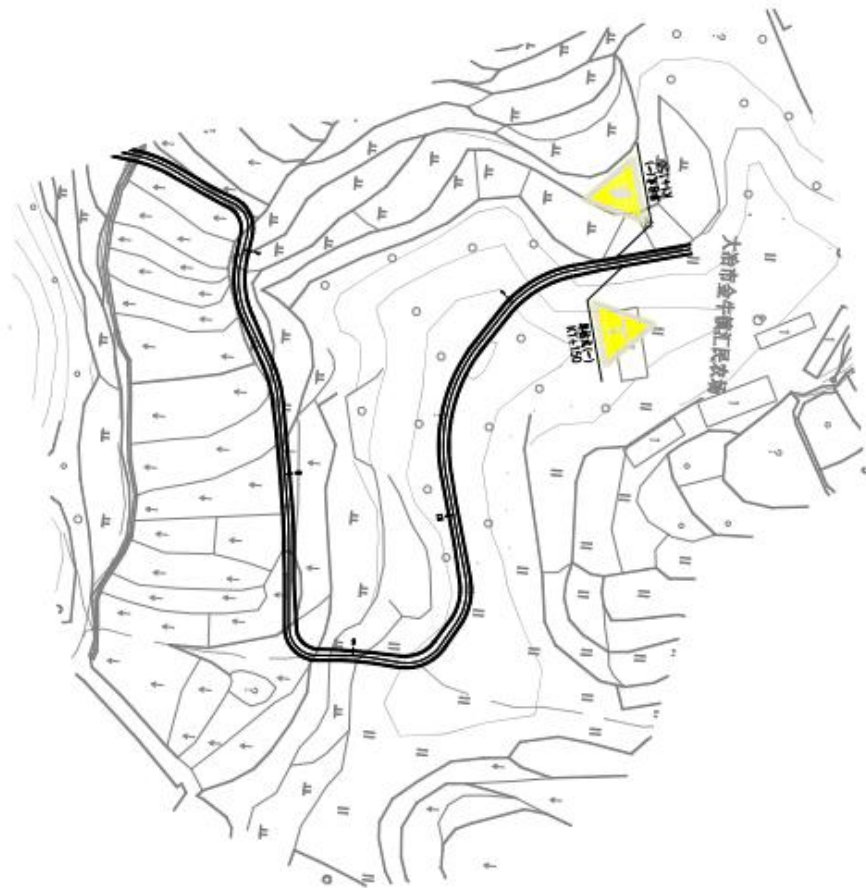


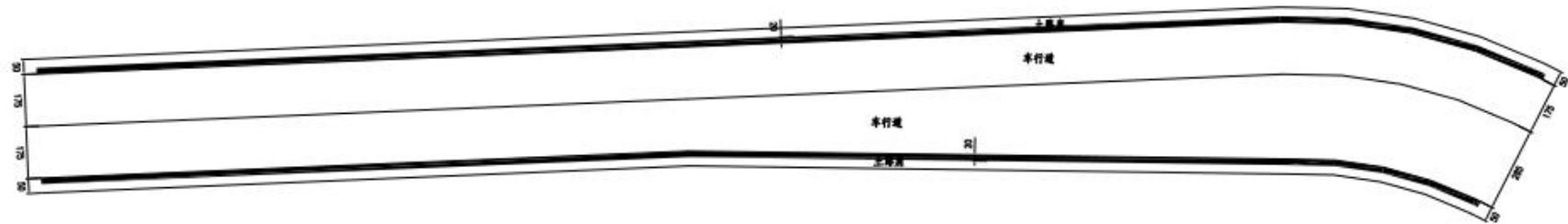






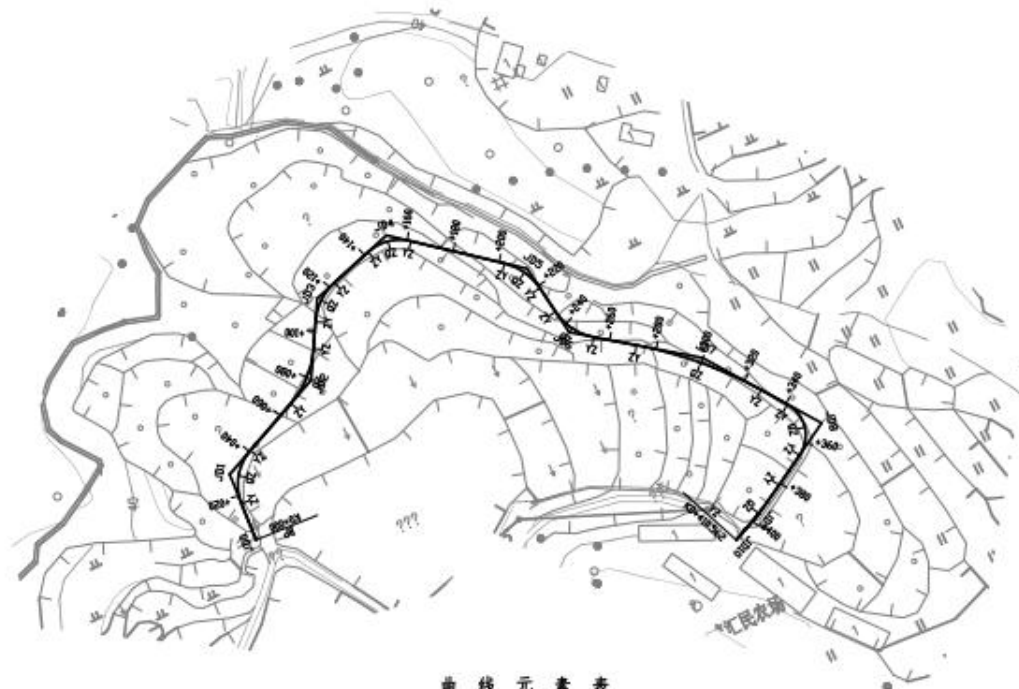






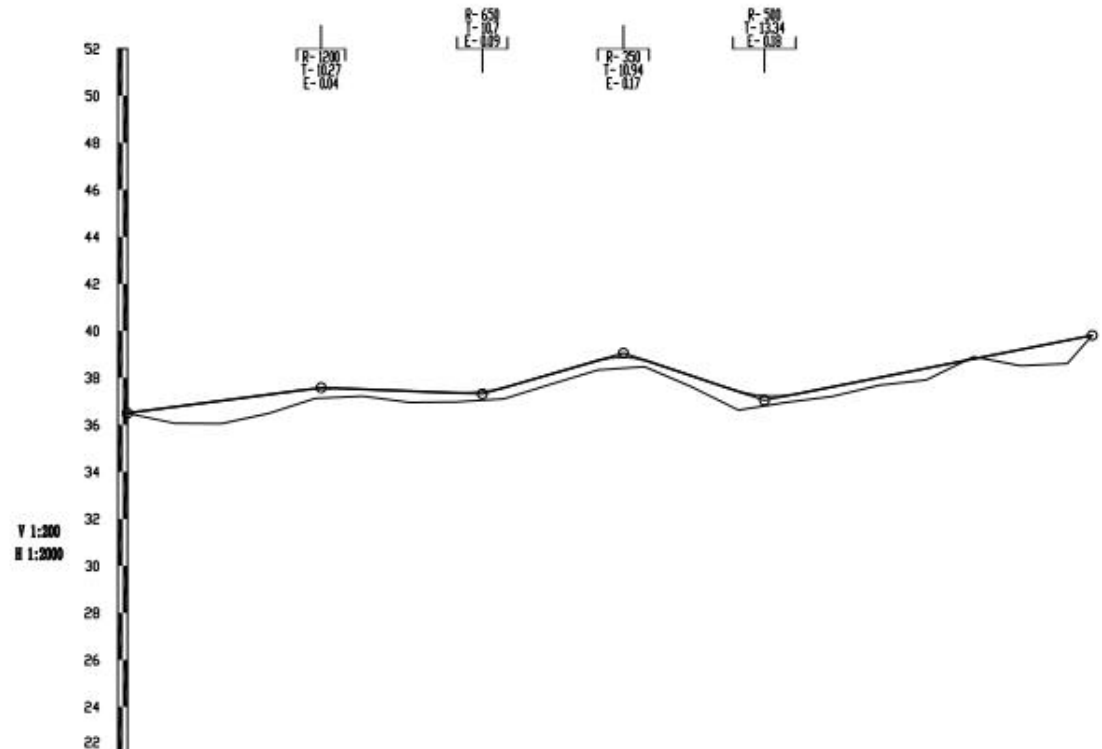
说明:
 1. 本图尺寸除注明外, 其余均以cm为单位。
 2. 施工设置时应参照中华人民共和国国家标准《道路交通标志和标线》

3、金牛镇黄泥村金青牛生态产业路二

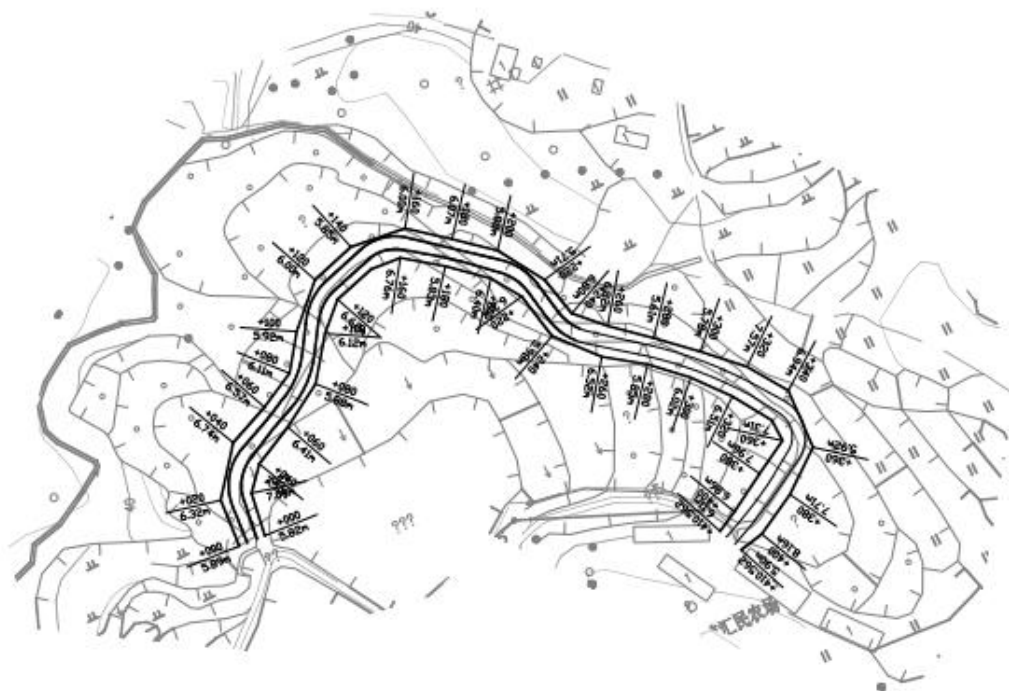


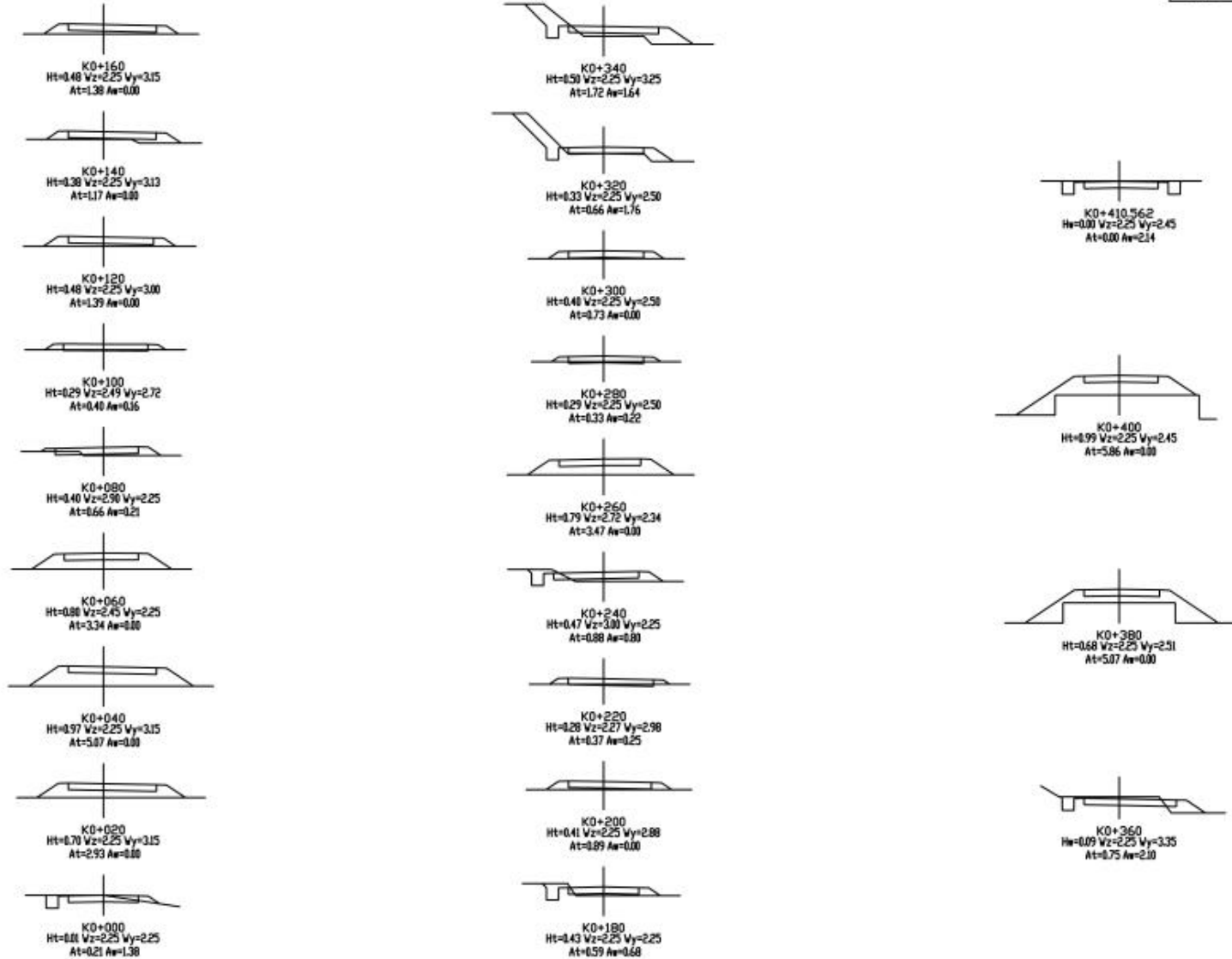
曲线元素表

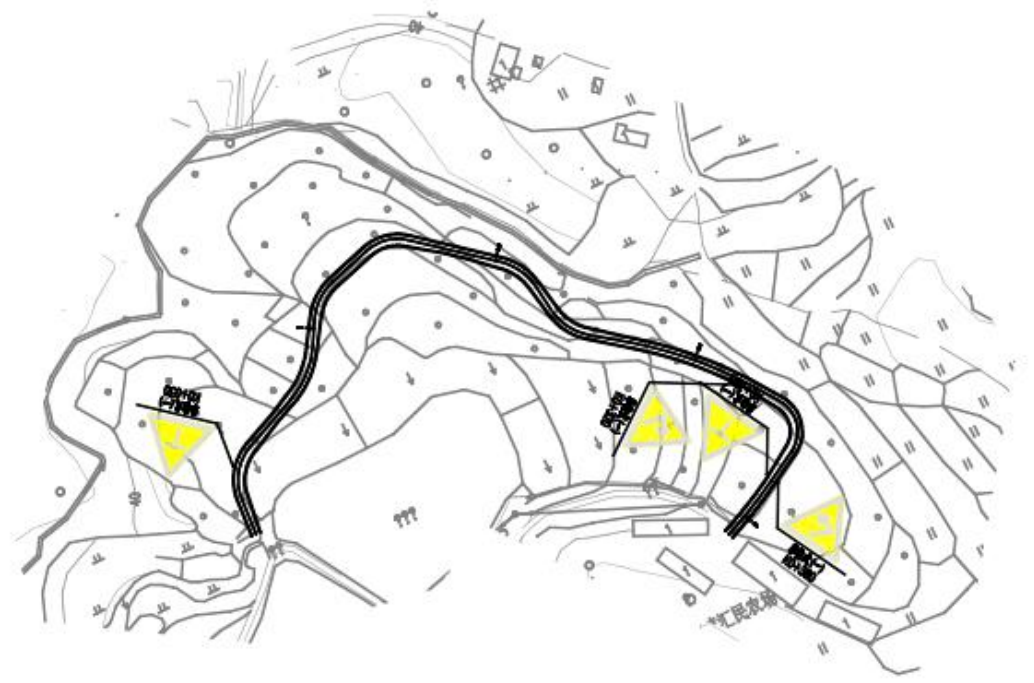
交点号	交点坐标		交点桩号	转角值	曲线要素值(米)					
	X(N)	Y(E)			半径	缓和曲线长	切线长度	曲线长度	外距	校正值
JD0	3320495.284	466661.780	K0+000							
JD1	3320525.112	466664.182	K0+029.924	62°40'28.6″(Y)	22		13.396	24.065	3.757	2.726
JD2	3320545.555	466713.001	K0+080.125	36°36'41″(Z)	40		13.233	25.560	2.132	0.907
JD3	3320575.269	466730.621	K0+113.763	43°29'23.3″(Y)	25		9.971	18.976	1.915	0.967
JD4	3320586.143	466768.937	K0+152.626	55°47'03.8″(Y)	20		10.586	19.472	2.629	1.700
JD5	3320546.801	466815.921	K0+212.207	43°04'28″(Y)	25		9.867	18.795	1.877	0.938
JD6	3320514.639	466819.862	K0+243.671	45°43'03.3″(Z)	25		10.539	19.948	2.131	1.130
JD7	3320479.811	466865.584	K0+300.016	17°56'14.7″(Y)	180		28.408	56.352	2.228	0.465
JD8	3320432.431	466898.470	K0+357.226	95°44'35.2″(Y)	15		16.584	25.065	7.362	8.103
JD9	3320409.768	466857.621	K0+395.838	7°22'51″(Y)	228.913		14.765	29.489	0.476	0.041
JD10	3320404.323	466843.897	K0+410.562							

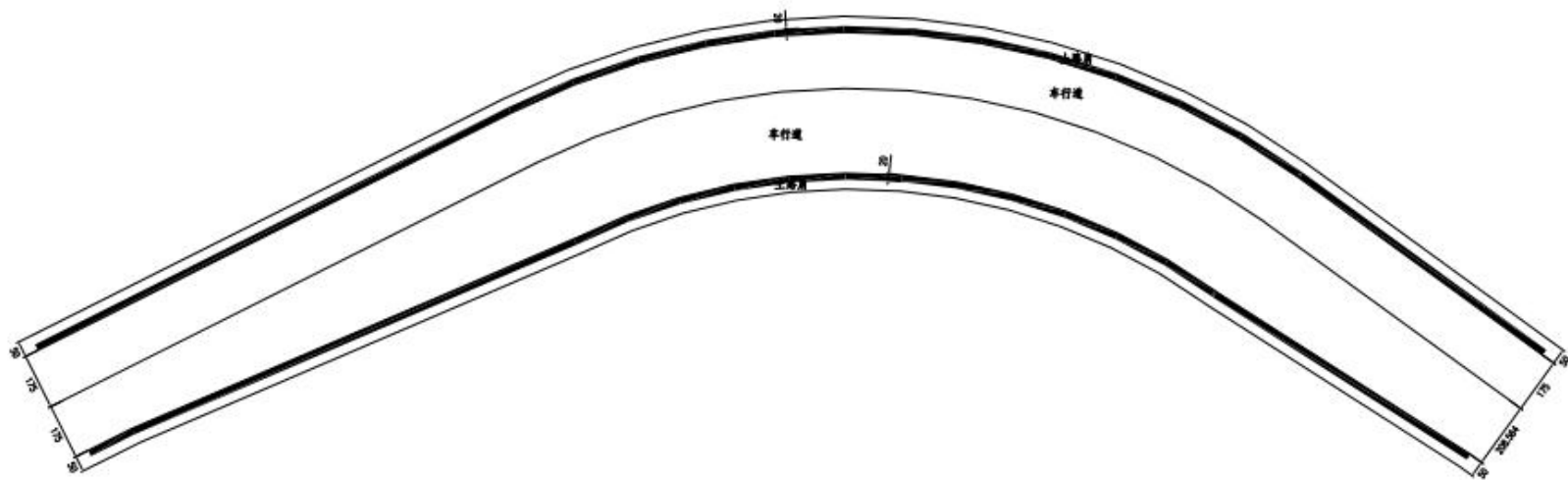


设计高程(m)	36.50	36.50	36.76	36.83	37.03	37.29	37.53	37.52	37.44	37.36	37.58	38.15	38.73	38.75	38.89	37.42	37.24	37.62	38.00	38.41	38.80	39.20	39.64	39.80
地面高程(m)	36.50	36.07	36.76	36.83	37.03	37.29	37.53	37.52	37.44	37.36	37.58	38.15	38.73	38.75	38.89	37.42	37.24	37.62	38.00	38.41	38.80	39.20	39.64	39.80
填挖高度(m)	0.00	0.70	0.97	0.80	0.40	0.29	0.48	0.38	0.48	0.43	0.41	0.28	0.47	0.79	0.29	0.40	0.33	0.50	-0.09	0.68	0.99	0.99	0.00	0.00
坡度(%)坡长(m)	36.50	1.32	82.47	0.82	37.53	68.60	-0.39	45.06	37.32	2.90	60.00	42.06	39.06	60.00	-2.29	42.06	37.04	1.90	139.49	38.80	39.20	39.64	39.80	
里程桩号	KD+000	+020	+040	+060	+080	+100	+120	+140	+160	+180	+200	+240	+260	+280	+320	+340	+360	+380						KD+10.562
直线及平曲线	R=22		R=22		R=22		R=22		R=22		R=22		R=22		R=22		R=22		R=22		R=22		R=22	









说明:
 1. 本页尺寸除注明者外, 其余均以cm为单位。
 2. 施工设置时应参照中华人民共和国国家标准《道路交通标志和标线》