

宗地图

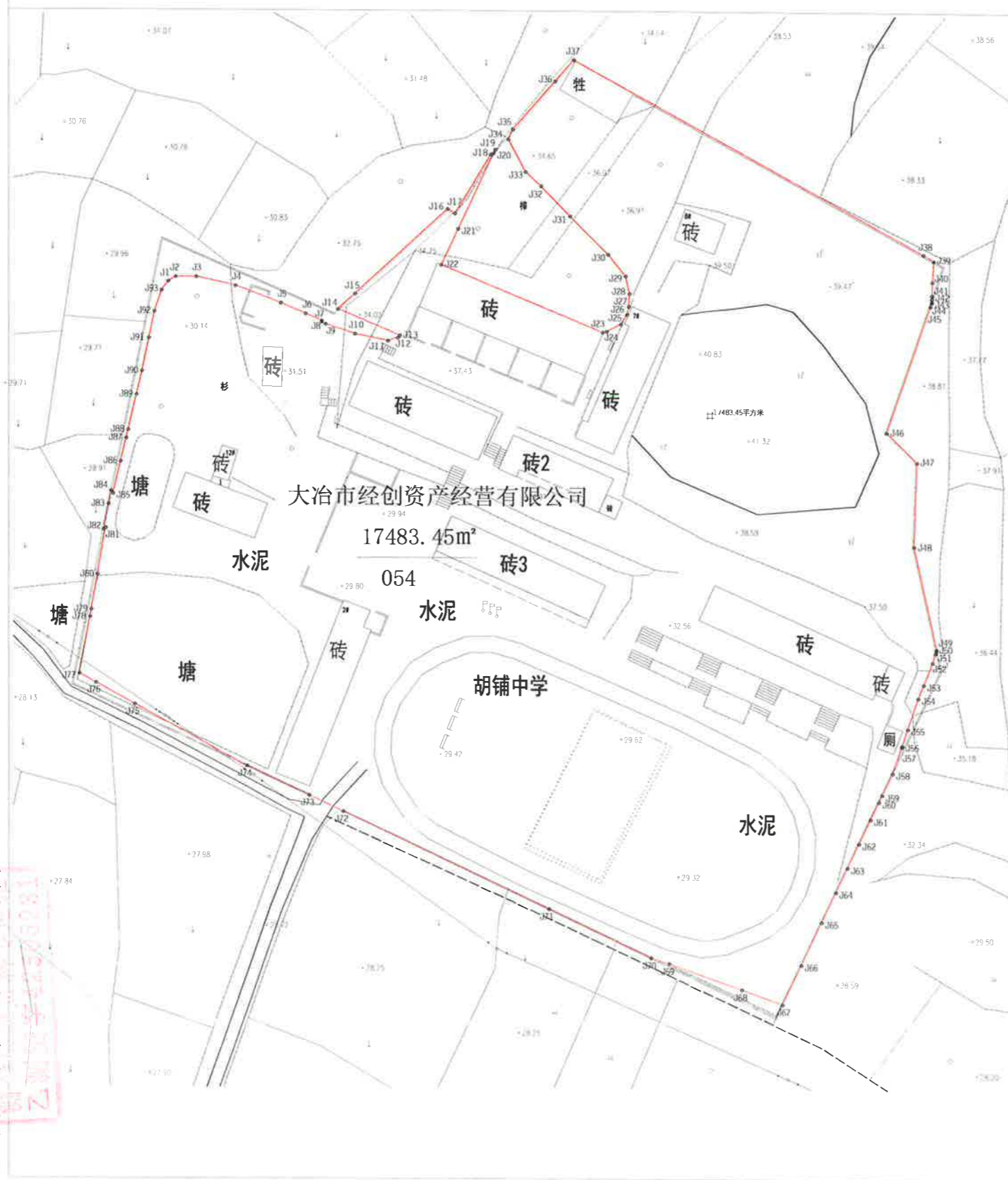
单位: m

宗地代码:

土地权利人: 大冶市经创资产经营有限公司

所在图幅号: 3319.00-38563.50

宗地面积: 17483.45m²



点号	X	Y	边长
J1	3319080.989	38563523.813	1.63
J2	3319081.825	38563529.204	3.81
J3	3319081.825	38563529.019	7.44
J4	3319080.177	38563536.270	8.95
J5	3319076.987	38563544.631	5.03
J6	3319074.994	38563549.245	3.32
J7	3319073.679	38563552.290	0.18
J8	3319073.499	38563552.272	0.82
J9	3319073.077	38563552.975	5.78
J10	3319071.248	38563558.463	6.18
J11	3319069.981	38563564.514	1.91
J12	3319070.544	38563565.343	0.57
J13	3319070.978	38563565.708	12.38
J14	3319075.895	38563555.329	4.25
J15	3319078.245	38563588.445	23.33
J16	3319094.612	38563575.853	1.80
J17	3319093.781	38563576.924	12.84
J18	3319104.779	38563583.547	1.24
J19	3319105.177	38563584.353	0.77
J20	3319105.021	38563584.032	

点号	X	Y	边长
J20	3319105.021	38563584.032	15.56
J21	3319090.900	38563577.515	7.41
J22	3319084.174	38563574.410	32.33
J23	3319071.240	38563604.248	0.78
J24	3319071.916	38563605.004	2.97
J25	3319073.288	38563607.642	2.14
J26	3319075.082	38563608.823	1.51
J27	3319076.580	38563609.119	2.43
J28	3319078.987	38563609.225	1.35
J29	3319082.259	38563608.486	5.11
J30	3319086.269	38563605.215	10.00
J31	3319093.340	38563598.144	7.76
J32	3319098.933	38563592.762	3.88
J33	3319101.571	38563589.912	6.84
J34	3319107.823	38563586.733	2.03
J35	3319109.473	38563587.582	11.87
J36	3319118.872	38563595.317	5.25
J37	3319122.457	38563598.747	74.09
J38	3319086.576	38563663.558	2.24
J39	3319085.444	38563665.493	

点号	X	Y	边长
J39	3319085.444	38563665.493	3.93
J40	3319081.320	38563665.264	2.49
J41	3319079.031	38563665.208	0.62
J42	3319078.409	38563665.194	0.58
J43	3319077.824	38563665.181	0.09
J44	3319077.735	38563665.179	0.78
J45	3319077.000	38563664.930	24.95
J46	3319053.373	38563656.924	7.95
J47	3319047.809	38563662.597	15.67
J48	3319032.150	38563662.122	19.65
J49	3319012.990	38563666.486	0.20
J50	3319012.795	38563666.427	0.35
J51	3319012.272	38563666.267	1.79
J52	3319010.556	38563665.745	4.49
J53	3319006.383	38563664.076	2.88
J54	3319003.891	38563663.079	6.07
J55	3318998.132	38563661.159	3.25
J56	3318995.052	38563660.133	0.26
J57	3318994.807	38563660.051	5.18
J58	3318989.835	38563658.414	

点号	X	Y	边长
J58	3318989.835	38563658.414	4.50
J59	3318985.822	38563656.496	1.40
J60	3318984.552	38563655.897	3.60
J61	3318981.258	38563654.364	5.00
J62	3318976.775	38563652.234	5.00
J63	3318972.252	38563650.103	5.00
J64	3318967.729	38563647.972	6.18
J65	3318962.142	38563645.341	8.82
J66	3318954.159	38563641.580	9.13
J67	3318946.838	38563638.177	8.04
J68	3318949.621	38563630.648	14.34
J69	3318954.283	38563617.025	3.56
J70	3318955.347	38563613.631	21.08
J71	3318964.322	38563594.560	42.21
J72	3318982.294	38563556.371	6.99
J73	3318985.297	38563550.061	12.83
J74	3318990.711	38563538.430	23.83
J75	3319002.178	38563514.876	8.29
J76	3319006.175	38563510.308	3.45
J77	3319007.838	38563507.284	

点号	X	Y	边长
J77	3319007.838	38563507.284	10.74
J78	3319018.402	38563509.232	1.42
J79	3319019.800	38563509.479	6.62
J80	3319026.317	38563510.625	8.81
J81	3319034.992	38563512.512	0.52
J82	3319034.708	38563511.722	4.83
J83	3319039.443	38563512.672	2.50
J84	3319041.895	38563513.163	0.64
J85	3319041.384	38563513.652	6.15
J86	3319042.371	38563514.961	4.48
J87	3319051.278	38563515.886	1.60
J88	3319053.794	38563516.252	6.73
J89	3319059.833	38563517.893	4.50
J90	3319064.210	38563518.973	6.32
J91	3319066.392	38563520.224	5.08
J92	3319075.365	38563521.271	4.16
J93	3319079.309	38563522.386	2.06
J1	3319080.989	38563523.813	

大冶市明宇测绘有限公司
1808727518
1808727518

2022年7月解析法测图
制图日期: 2022年8月5日
审核日期: 2022年8月5日

1:500

制图者: 刘元义
审核者: 纪荣华